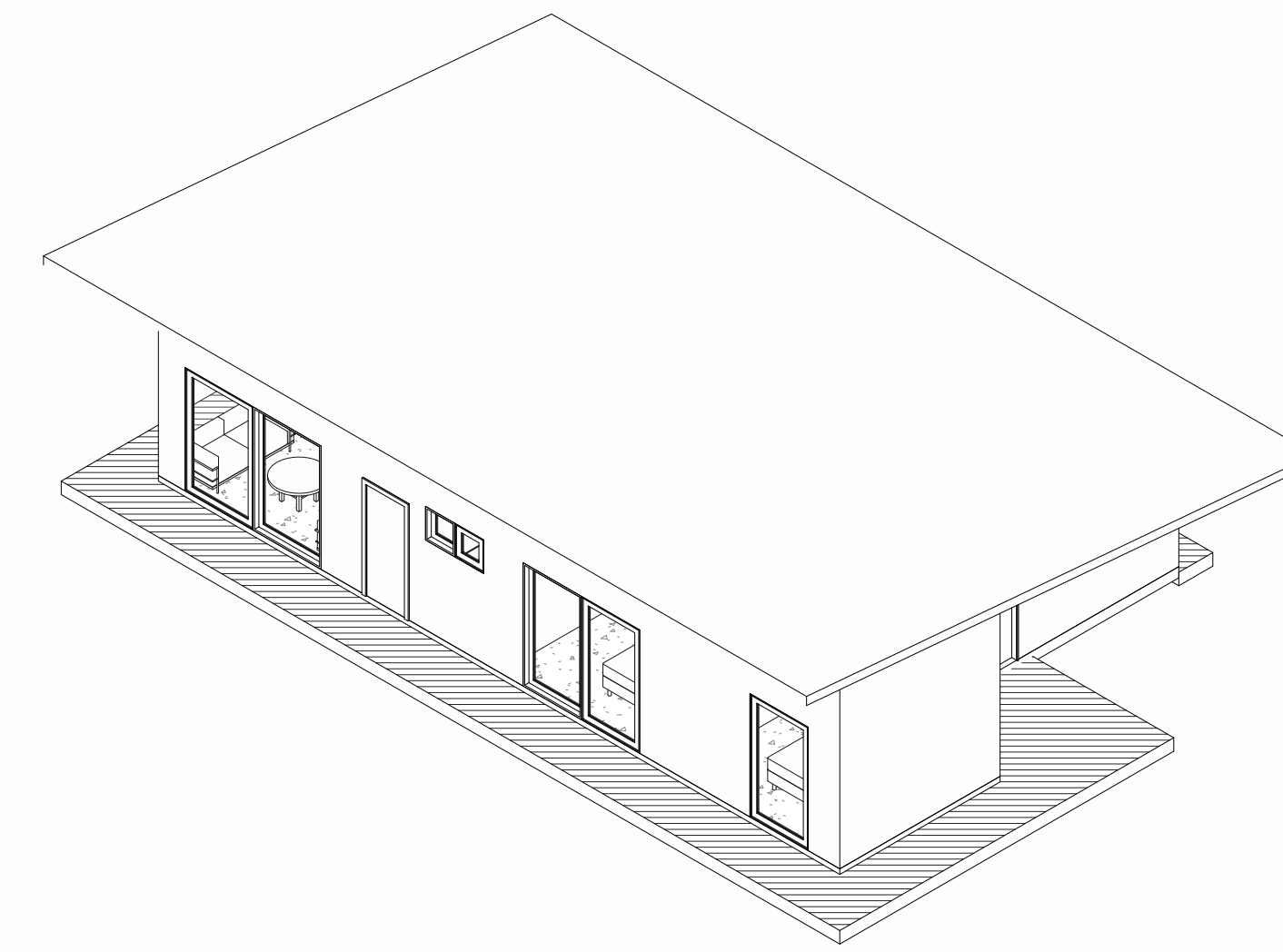
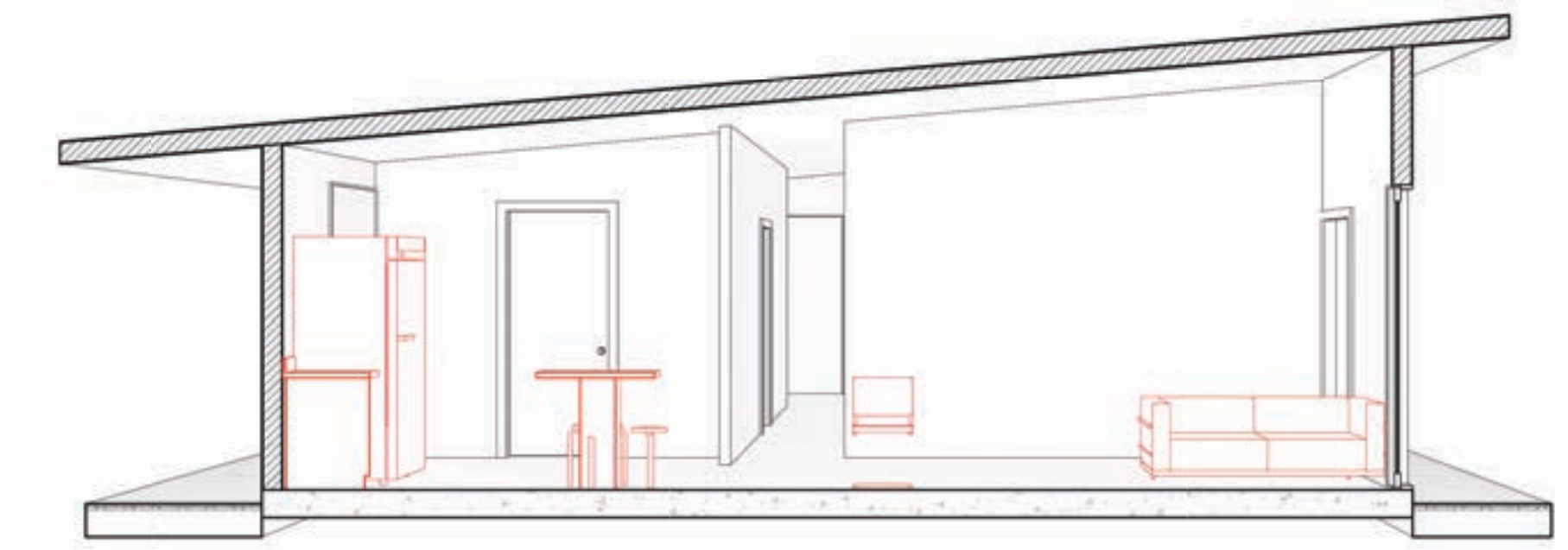


ISO 02



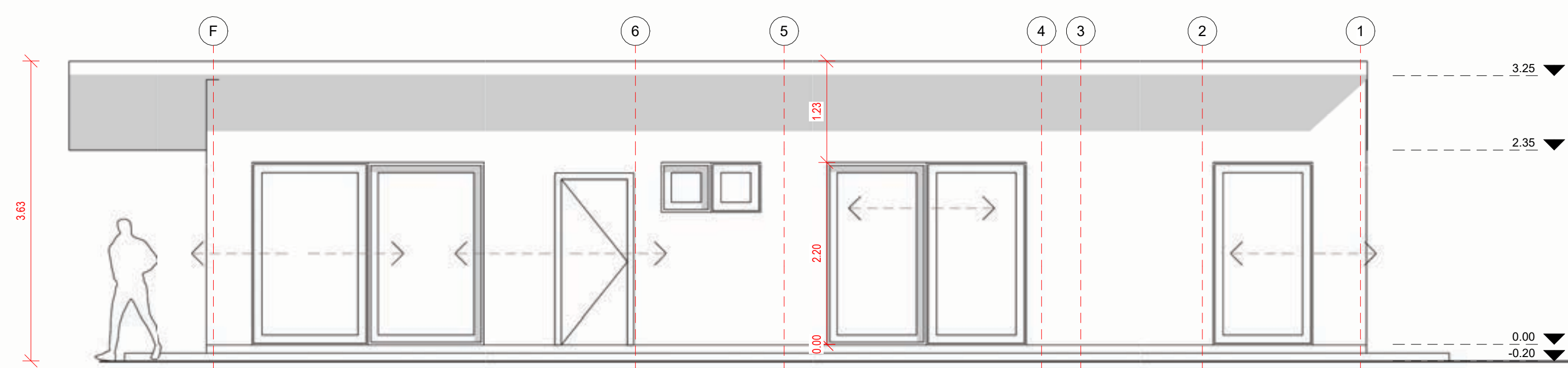
ISO 01



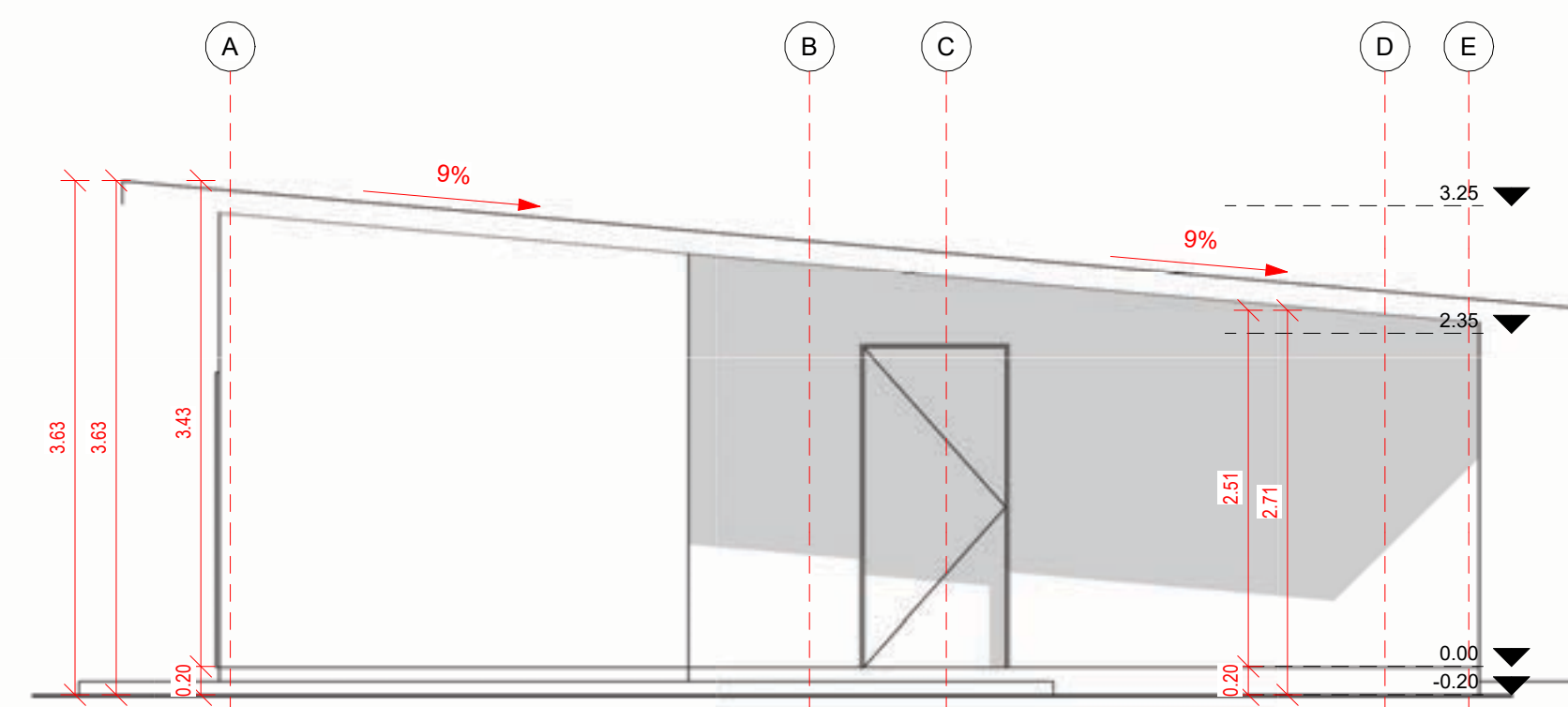
Corte Fugado 02



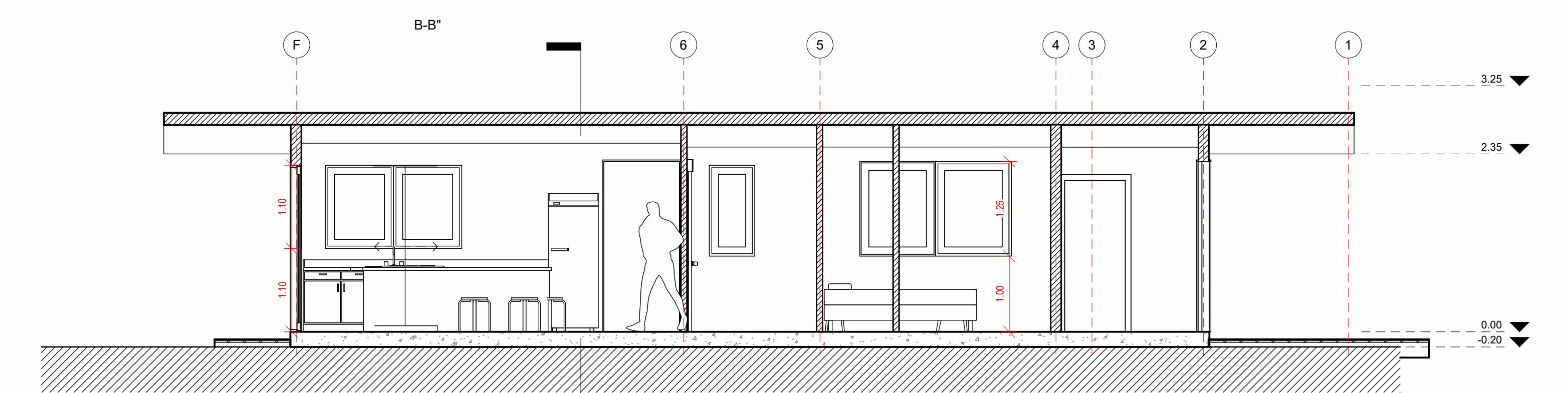
Corte Fugado 01



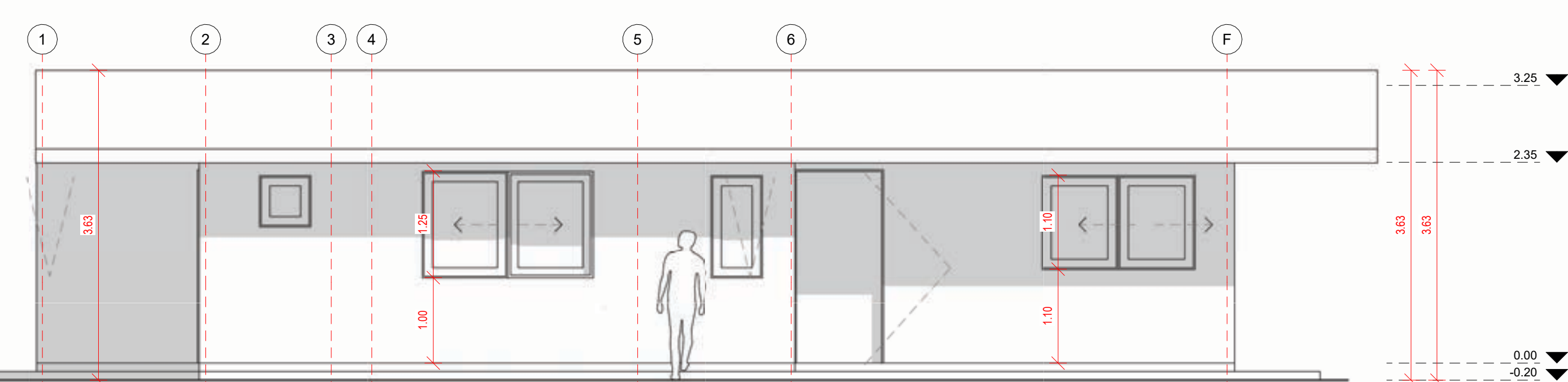
Norte
1:50



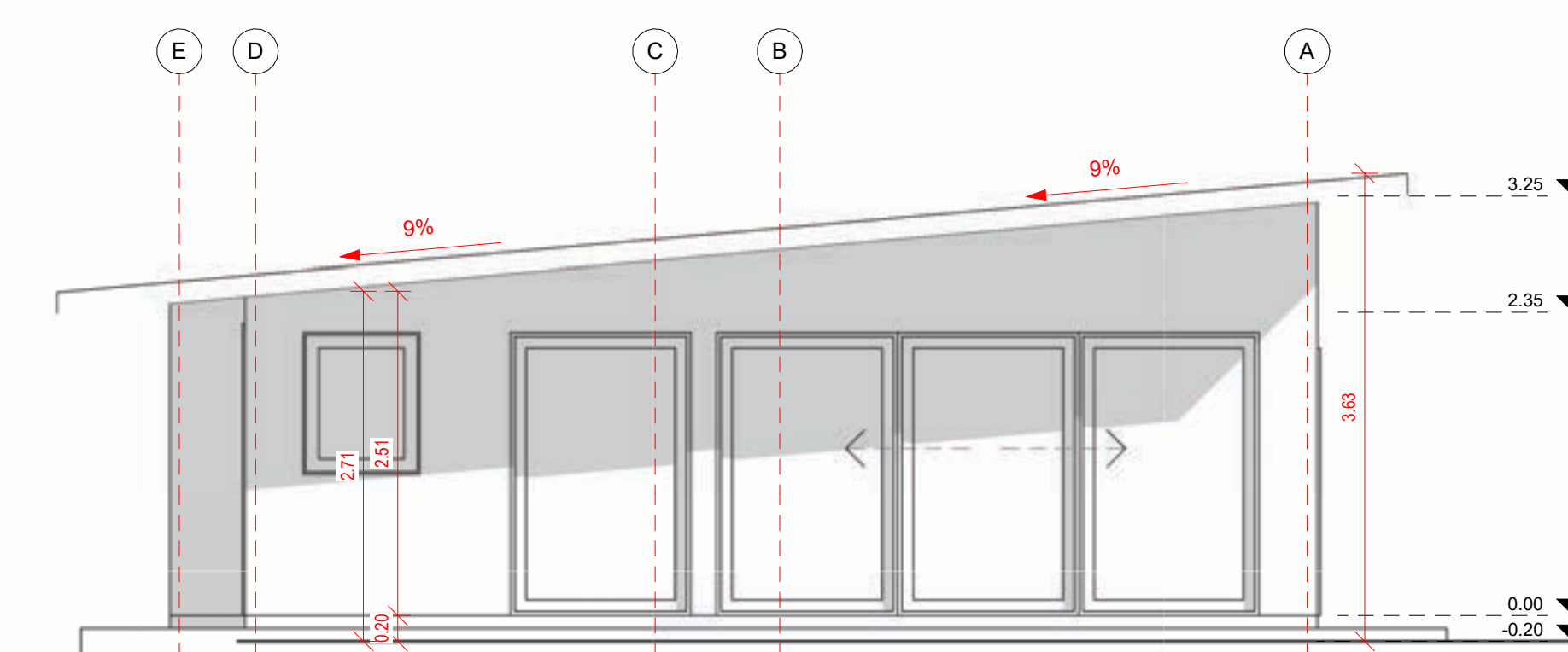
Oeste
1:50



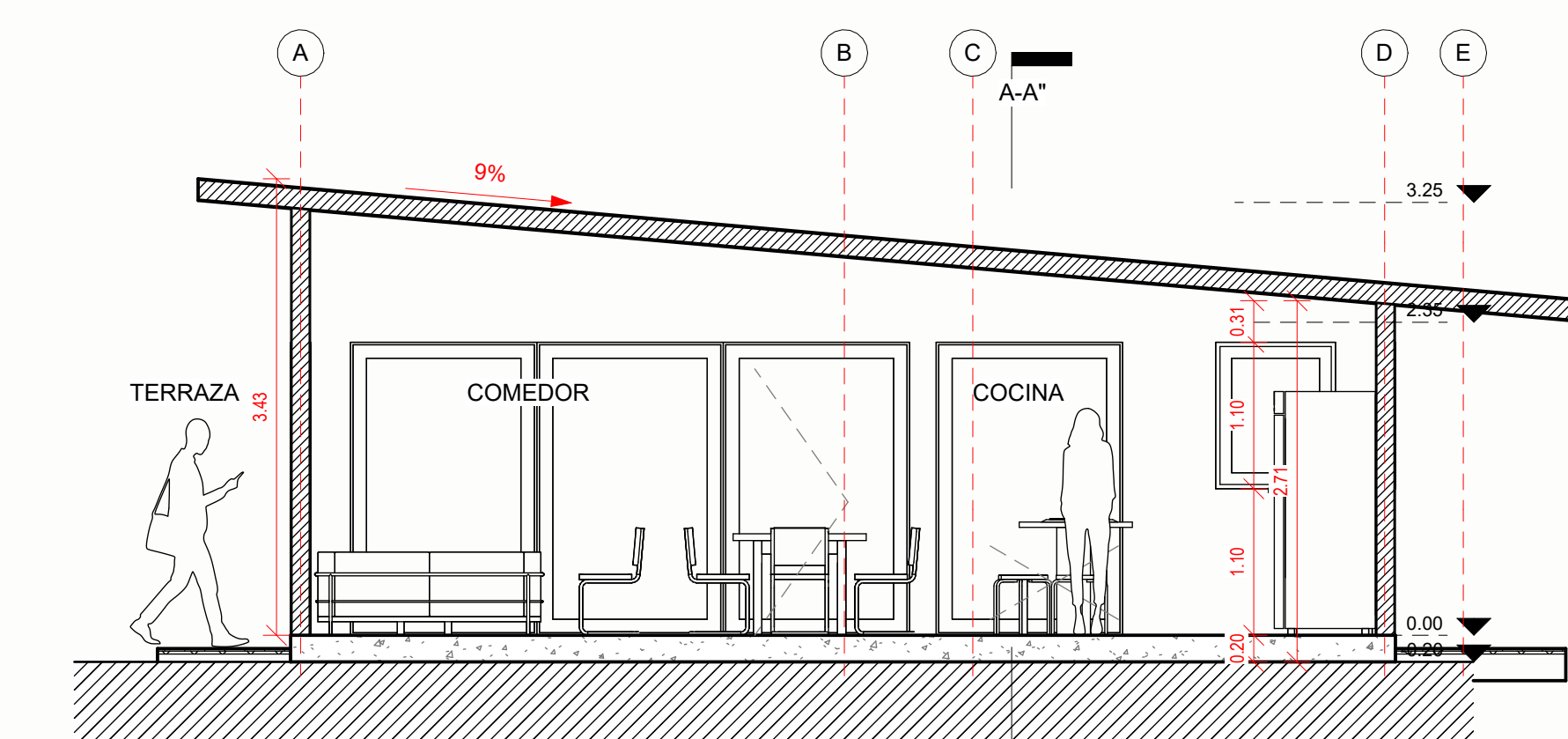
Sección A-A''
1:50



Sur
1:50



Este
1:50



Sección B-B''
1:50

Cecilia Moya

Variante: Muro - Techo - Piso

Metros²: ...

Programa:

Escala: Como se indica

A 01

